



# Your Home Watershed

## Update

A semi-annual newsletter for Gallatin Watershed residents

## Urban Development and Agriculture in the Gallatin Watershed

Promoting conservation and enhancement of our water resources while supporting the traditions of community, agriculture and recreation.

### Fall 2010

#### In this Issue

Letter from the GGWC Chair ... Page 2

Gallatin Conservation District News... Page 2

City of Bozeman Storm-water Update ... Page 2

Montana Import Group Partners ... Page 3

2nd Annual Holiday Card Winners ... Page 3

GGWC Demonstration Rain Garden ... page 4

What Water Means to Me Kids Korner ... page 4

#### Quotable Quotes

"We forget that the water cycle and the life cycle are one."

- Jacques Cousteau

By Susan Duncan

Irrigated agriculture has been a key component of prosperity in the Gallatin Valley for more than 100 years. Even today, thirty- eight separate ditch companies own 2500 miles of main canals (and an extensive web of lateral ditches) that keep the valley green and growing. As cities and suburbs expand, finding ways for urban development and agricultural infrastructure to co-exist is more important than ever.

The sole purpose of an irrigation canal is to deliver the volume of flow specified by a legal water right from the river to a ditch company member. Think of it as an aqueduct – privately built, funded, and maintained by its members. Each ditch is legally protected by (1) an easement on its location and (2) a broader easement to allow access for maintenance, throughout its entire length, regardless of land ownership.

Developers and residential landowners question how these easements affect their property rights. They ask: How can I respect a ditch easement if I don't know it is there? Does the ditch pose a risk of flooding? As a developer, how do easements affect the layout of my subdivision? Can I use the ditch to dispose of excess water or storm water? Now that this land is part of the city, why can't I assume these ditches are abandoned?



Farmer's Canal photo courtesy of GGWC

GGWC's Fall Tour "Urban Development and Agriculture in the Gallatin Watershed" will explore ways planners, developers, and irrigators can work together. The tour will highlight an on-going mapping project of irrigation ditches. The project is a collaboration among Association of Gallatin Agricultural Irrigators (AGAI), the Gallatin Conservation District, the County GIS Department, and MSU Land Resource and Environmental Science students. Visits to sites on Farmers Canal and Spain-Ferris Ditch will show participants the value of county regulations for subdivision review and cooperative agreements between ditch companies and neighboring landowners.

*Susan Duncan is a board member of the GGWC and the Association of Gallatin Agricultural Irrigators (AGAI), Belgrade, MT.*

### Thank you Gallatin Stream Teams 2010!

GGWC and the Gallatin Local Water Quality District's volunteer stream monitoring program recently completed its third successful season collecting data from four streams, Bozeman (Sourdough), Bridger, Hyalite, and Mandeville Creeks in the Gallatin Watershed.

GGWC would like to thank all the stream volunteers. Without their

commitment and effort the program would not be successful. Thank YOU!!

GGWC will host a mini-symposium in February, 2011 to share results from the past three years. Please stay tuned for more details.

Interested in helping in 2011? For more information, please contact Sharlyn at 219-3739 or [info@greatergallatin.org](mailto:info@greatergallatin.org).

## Letter from the GGWC Chair



*Dear Gallatin Valley Residents and Visitors,*

*With the onset of fall, we are wrapping up our field and monitoring season.*

*Thank you to all of our dedicated volunteers on the Stream Teams. We will be reporting on the results of our stream monitoring this winter, keeping Gallatin watershed residents tuned in to water quality on our streams.*

*I am continually impressed with the commitment of our community to GGWC's mission. This summer we were honored to be the recipients of Hatchopedia.com's second annual Big Fish and Old Blue contest fundraiser, we saw many of you at our first annual Run for the Rivers, and benefitted from volunteers and local business contributions that supported our first rain garden installation, at City Hall. And certainly not least of all, we now have a signature beer – Watershed Pale Ale – made with local water! Support*

*GGWC by asking for it at your local watering hole or at the Bozone.*

*This winter, we may be in for unusually cold and wet weather due to the onset of La Nina ocean conditions, which hopefully bodes well for both skiers this winter and irrigators next year. In the mean time, we hope to see you at one of our upcoming events, and for your continued support in GGWC's core mission of promoting conservation and enhancement of the valley's water resources. Look for our holiday card sales at the Christmas Stroll and around town.*

*Please consider recycling this newsletter by passing it on to friends or neighbors, and if you would like any further information, contact us at [info@greatergallatin.org](mailto:info@greatergallatin.org). We are always appreciative and in need of your contributions and volunteers to help with our events, monitoring, and to serve on our Board of Directors.*

*Sincerely,*

*Peter Skidmore, Chair*

## Gallatin Conservation District News

**By Marcie Murnion-Learn**

**G**reetings from the Gallatin Conservation District!

This summer the Gallatin CD entered into an agreement with the Extension Service to sponsor small acreage assistance for Gallatin County landowners. Michelle Passmore was hired by Extension to provide this service and so far has met onsite with over 75 small acreage landowners. The common denominator for most visits were noxious and nuisance weeds, followed by grazing management. Michelle was also able to assist landowners with a variety of topics including soil testing, irrigation efficiency, tree pests, and varmint management. Besides just private landowners, she has also worked with several subdivisions and home owner associations. She also conducted much resource work over the phone assisting over 80+ individuals.

The Gallatin CD believes that effective management of any size acreage helps protect our watershed and promote awareness of the many challenges that are present. Water quantity and quality are a constant in our lives and our goal is to continually work to help maintain a healthy watershed.

Other contractual work sponsored by the CD this summer includes mapping of ditch systems, weed management along the Gallatin River from Four Corners to Big Sky, and a watershed prioritization plan conducted through the GGWC.

For additional information on the Gallatin CD please visit: [www.gallatincd.mt.nacdn.net](http://www.gallatincd.mt.nacdn.net)

*Marcie Murnion-Learn, is the District Administrator for the Gallatin Conservation District, Bozeman, MT.*

## Introducing Watershed Pale Ale



The Bozeman Brewing Company has teamed up with the GGWC to introduce a new beer! A portion of the proceeds is being generously donated to GGWC. Support your local brewery and the GGWC by requesting a Watershed Pale Ale!

## City of Bozeman Stormwater Update

**By Dustin Johnson**

**C**urrently the City of Bozeman is working on updating the local storm water guidelines for future development and construction. There are several layers included with these updates. Things like a new Best Management Practices (BMP) Manual that would provide guidance in designing low impact developments with respect to storm water are being drafted. The BMP manual would also provide direction to contractors on how to help protect local waterways during construction.

Along with the BMP manual City staff has been working on a construction storm water permitting system. The permitting system would allow City staff to verify storm water construction BMP's are being followed and provide an avenue in which contractors can be educated the importance of storm water as it relates to construction.

*Dustin Johnson is a Project Engineer for the City of Bozeman*

## Did You Know?

*The three largest sources of storm water pollution are: herbicides and pesticides from agriculture, urban runoff, and sediment from construction sites.*

## Quotable Quotes

A waster of water is a waster of better.”

- Old Irish Adage -

## Montana Import Group Partners with GGWC

By Alan Cawthon

Montana Import Group is a proud partner of the Greater Gallatin Watershed Council. We care deeply about the health of our water resources and want to do our part in protecting, and otherwise stewarding, the rivers, creeks and streams that make Montana such a special place. As a business, this is a unique opportunity to really make a difference for future generations and do something meaningful. And, after all, isn't that what we all want – to make a difference?

With that said, Montana Import Group is working diligently to get all of our employees to understand the value of stewardship, both professionally and personally. We have implemented programs at the dealership to ensure that our business operates with the commitment of stewardship, including finding ways to improve our water management.

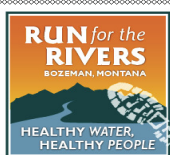
We have sponsored partner events and projects including the display rain garden at City Hall. Our relationship with GGWC means that they can help us be better stewards within our business, and we can help them work towards protecting our watersheds. Together we can help to create stewards within our community.

Alan Cawthon, President,  
Montana Import Group

Mark your  
Calendar!

5k or 10k  
May 28, 2011

For more info or  
how you can help, please call 219-3739  
or [www.runfortherivers.com](http://www.runfortherivers.com)



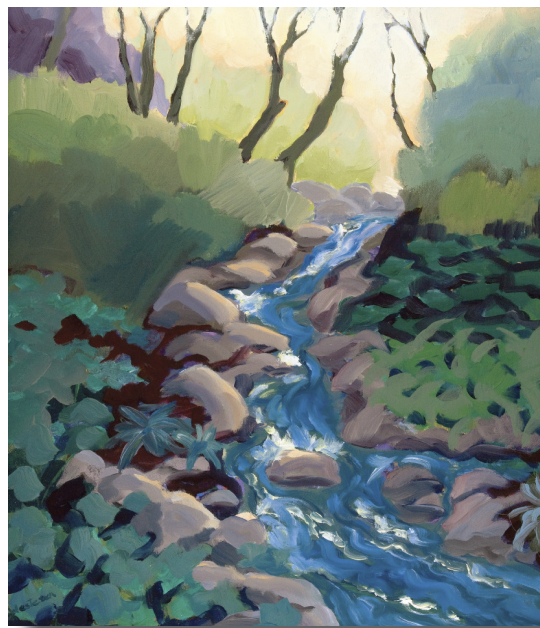
## 2nd Annual Holiday Card Art Competition

By Sharlyn Izurieta

GGWC is pleased to announce the winners of the second annual Holiday Card Art Competition! Amateur and professional artists from Montana submitted a variety of art from photographs to oil paintings. The three winners are Priscilla Westesen, Karen Waller, and Nikole Rae Greer, all of Bozeman. The winning art can be viewed at the GGWC's website, [www.greatergallatin.org](http://www.greatergallatin.org).

The winning art will be reproduced as a holiday card for the 2010 holiday season. Cards will be for sale at local businesses during the holiday season, at the HELP Center's 33rd Annual Festival of the Arts, the Emerson Cultural Center's Holiday Bazaar, the Bozeman Angler during the Bozeman Christmas Stroll, the Big Sky Christmas Stroll. The winning art and other top entries will also be displayed at the holiday events and at the Greater Gallatin Watershed Council's Annual Meeting and Silent Auction, January 26th, 2011 at the Holiday Inn, Bozeman.

The holiday cards are a great way to share a little bit of Montana with your family and friends during the holiday season and to support your local



Dawn at Cascade Creek by Priscilla Westesen

watershed group. Proceeds will help the GGWC promote conservation and enhancement of our water resources while supporting the traditions of community, agriculture, and recreation. For more information where you can view the art or purchase cards, please visit the GGWC website for locations or to download an order form.

For more information about the holiday cards and art competition, please contact Sharlyn Gunderson-Izurieta, Watershed Coordinator for the Greater Gallatin Watershed Council, at 219-3739 or [sgizuri@gmail.com](mailto:sgizuri@gmail.com).

## Help Support the Gallatin Watershed

Enclosed is my tax-deductible donation payable to the Greater Gallatin Watershed Council:

\_\_\_\_\_ \$15 \_\_\_\_\_ \$25 \_\_\_\_\_ \$50 \_\_\_\_\_ \$75 \_\_\_\_\_ \$100 \_\_\_\_\_ \$Other

\_\_\_\_\_ I am interested in volunteering my valuable time to help the GGWC

Name \_\_\_\_\_

Address \_\_\_\_\_

City, State, Zip \_\_\_\_\_

Tel: \_\_\_\_\_ Email \_\_\_\_\_

THANK YOU FOR YOUR CONTRIBUTION

# Demonstration Rain Garden

By Sharlyn Izurieta

GGWC partnered with the City of Bozeman and Sweet Pea's Nursery to install a demonstration rain garden at the Bozeman City Hall building, 121 N. Rouse. The demonstration rain garden was installed at a rain garden party, June 19th, 2010. Joe Skinner, Gallatin County Commissioner, and Peter Skidmore, GGWC Chair, did the honors of digging the first hole and volunteers from around the watershed, including the MSU Extension Master Gardeners and Bozeman Youth Initiative, helped install the rain garden.

The garden was built at a scale that will provide residents with the ability to visualize how a similar garden can be built in their own yard or property.

In addition to the partners, the project's major sponsor, Montana Import Group, was integral in the rain garden becoming a reality. Our supporters, Gallatin Conservation District, Montana Department of Environmental Quality, Montana Smart Growth Coalition, Classic Ink, and Gallatin Local Water Quality District, and a large number of local businesses and organization also helped make the project a reality.

Still to come is an educational sign to be installed this fall and two benches. For more information or to request a copy of the Gallatin Watershed Rain Garden Resource Guide, please contact Sharlyn Izurieta, GGWC Coordinator, 219-3739 or [info@greatergallatin.org](mailto:info@greatergallatin.org).

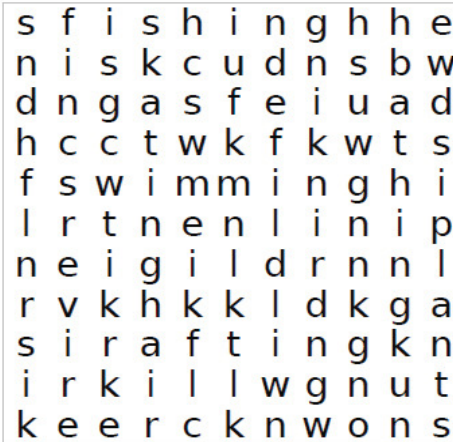
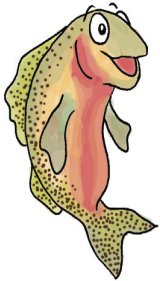


Candace Hamlin, GGWC Board member and Errol Schumann, volunteer planting the rain garden.

## What Water Means to Me

See if you can find and circle these words

Tom would like to thank Hailey Hamlin for creating this amazing word search!



- creek
- fish
- lake
- ducks
- rivers
- rafting
- fishing
- swimming
- snow
- skiing
- skating
- bathing
- drinking
- plants
- wildlife

Tom is a Westslope Cutthroat Trout, the only native trout in the Gallatin watershed.

## Board of Directors

- Peter Skidmore, Chair
- K.E. Purcie Bennett, Vice Chair
- Doug Fletcher, Secretary/Treasurer
- Karin Boyd
- Tammy Crone
- Susan Duncan
- Kristin Gardner
- Candace Hamlin
- JP Pomnichowski
- Kathleen Williams

Sharlyn Izurieta, Coordinator

PO Box 751  
 Bozeman, MT 59771  
 (406) 219-3739  
[www.greatergallatin.org](http://www.greatergallatin.org)  
[info@greatergallatin.org](mailto:info@greatergallatin.org)



Greater Gallatin Watershed Council  
 PO Box 751  
 Bozeman, MT 59771-0751

## Our Supporters

- Gallatin Local Water Quality District
- Gallatin Conservation District
- Montana Import Group
- MT Dept. of Environmental Quality
- Association of Gallatin Agricultural Irrigators
- The Montana Watercourse
- Hatchopedia.com
- Blue Water Task Force

Come see us at GGWC's Annual Meeting and Silent Auction  
 January 26th, 2011 at the Holiday Inn in Bozeman!